



iPERL® Water Meter

Installation Instructions

GROUNDING REQUIREMENTS

Make sure that metallic water service plumbing is properly grounded as per local electrical codes. A ground strap or similar must be used if you believe or suspect electrical current is passing through the service pipe or if you believe or suspect that the service pipes may be used as an electrical ground.

CONSIDERATIONS

- iPERL meters should be installed on the discharge side of a pump with the flow directional arrow pointed downstream.
- If a pump is installed on the outlet side of the iPERL meter, a minimum of ten (10) diameters of straight pipe should be immediately downstream of the iPERL meter to obtain valid system registration.
- Suitable shutoff valves should be installed adjacent to the inlet and outlet of the iPERL meter so that the service may be shutoff if it is necessary to remove the meter.
- Clean and flush the service line thoroughly on the inlet side before installing the iPERL meter.
- The water lines must be coaxially aligned within three (3) degrees (0.4 inches) to ensure a proper seal.
- It is recommended that old gaskets be completely removed and discarded and new 3/32" thick rubber gaskets be used with every installation.

Step 1: Prep the Meter and Site

The iPERL meter is designed to be installed in either an outdoor pit setting or in an indoor basement setting.

1. Unpack the meter from the packaging and remove the spud thread protectors. Inspect the meter for any parts that may have been damaged during shipping.
2. If a new install, thoroughly flush the new water service plumbing before installing the meter.
3. Turn off the water supply valves. See Grounding Requirements.
4. If an existing install, pull the current meters out of the pit or disassemble the current meter.

Step 2: Install the Meter

1. Orient the iPERL meter so that the direction of the flow arrow on the meter body is aligned with the direction of the plumbing system water flow.
2. Install the new iPERL meter connection gaskets in both meter couplings.
Note: Never use thin meter gaskets.
3. Align threads and hand-tighten the coupling nuts.
Note: Ensure water service connections are aligned and the meter has stress-free line connections to avoid damaging the meter.
4. Using a wrench, tighten an extra 1/4 to 1/2 turn on each coupling nut.
Note: Do not over-tighten. You may tighten after turning on the water (if leaks are present). Additionally, do not use the opposite coupling nut for support when tightening a coupling nut. This could overstress the meter body and cause it to crack.
5. After the new iPERL meter is installed, shut off the outlet shut-off valve.
6. Open the inlet shut-off valve slowly until the meter is full of water and ensure that there are no leaks.
7. Open the outlet valve slowly until air is out of the meter and service line.
8. Open a valve downstream of the meter to ensure that no foreign debris in the water obstructs the operation of the meter.
9. Check the read on the meter to make sure it is registering a positive number and not displaying an empty pipe alarm. If the alarm is present, make sure the meter is installed in the correct direction. It will take about 30 seconds for the iPERL to register flow after an empty pipe alarm is triggered.
10. Connect a coupler cable or a 3-wire cable and attach to a SmartPoint module (if applicable).
11. Record read information as required by the utility.

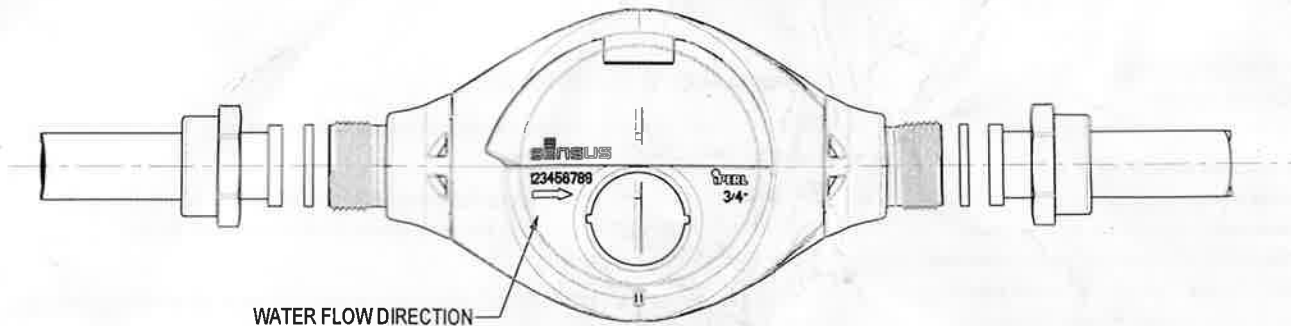




iPERL® Water Meter

Installation Instructions

TOP VIEW METER INSTALLATION

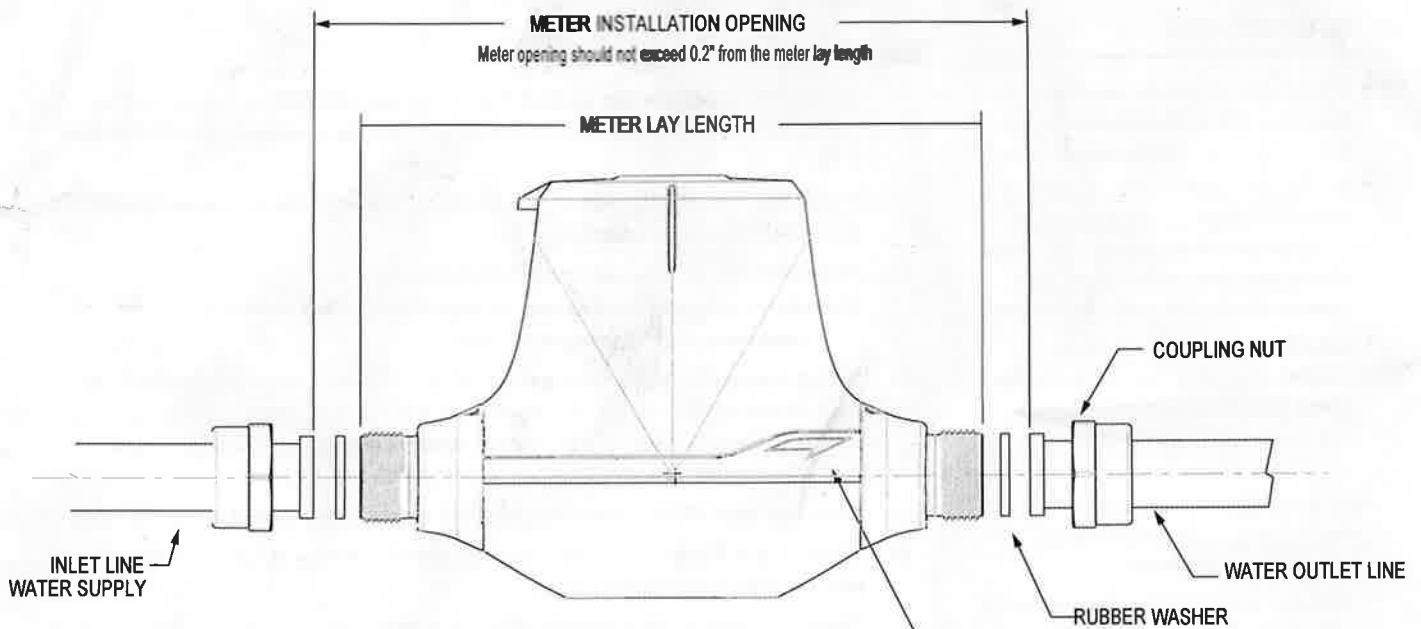


WATER FLOW DIRECTION

METER INSTALLATION OPENING

Meter opening should not exceed 0.2" from the meter lay length

METER LAY LENGTH



INLET LINE
WATER SUPPLY

COUPLING NUT

WATER OUTLET LINE

RUBBER WASHER

WATER FLOW DIRECTION

SIDE VIEW METER INSTALLATION

SENSUS
a xylem brand

637 Davis Drive
Morrisville, NC 27560
1-800-638-3748
sensus.com

©2019 Sensus. All products purchased and services performed are subject to Sensus' terms of sale, available at either sensus.com/TC or 1-800-638-3748. Sensus reserves the right to modify these terms and conditions in its own discretion without notice to the customer. The Sensus logo is a registered trademark of Sensus.

This document is for informational purposes only, and SENSUS MAKES NO EXPRESS WARRANTIES IN THIS DOCUMENT. FURTHERMORE, THERE ARE NO IMPLIED WARRANTIES, INCLUDING WITHOUT LIMITATION, WARRANTIES AS TO FITNESS FOR A PARTICULAR PURPOSE AND MERCHANTABILITY. ANY USE OF THE PRODUCTS THAT IS NOT SPECIFICALLY PERMITTED HEREIN IS PROHIBITED.